

BY FAR  
THE BEST!

## THE SPAX ADJUSTING SCREW

Wood screw for continuously adjustable spacing between battens and wooden substructures



# SPAX ADJUSTING SCREW

## FEATURES

### THE T-STAR *plus* SYSTEM

T-STAR *plus* Bit in combination with T-STAR *plus* drive for better force transmission and guiding



### FLAT HEAD

Clean sinking and high holding forces

### RETAINING GROOVES

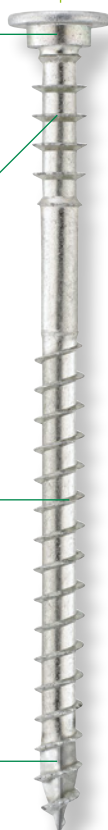
Ensure a sturdy hold of the wooden substructure

### SPAX THREAD

Enables fast insertion with minimal effort thanks to slide coating and optimal thread pitch

### 4CUT AND SERRATIONS

Effectively prevents splitting and reduces the driving torque. No pre-drilling necessary (depending on wood).





# THE SPAX ADJUSTING SCREW

## FULL CONTROL IN ACTION

The SPAX adjusting screws are the ideal helpers for all wood-to-wood connections where levelling is required. This is made possible by the retaining grooves below the screw head, which grip into the wood of the component during the adjustment process to ensure secure assembly with millimetre precision. Thanks to its WIROX coating, the screw can be used both indoors and in outdoor areas without direct exposure to the weather.

### Product benefits:

- ⊗ Time-saving: fast and easy installation since shimming with wedges is no longer required\*
- ⊗ Fastening with low edge clearances possible - prevents splitting thanks to 4CUT and thread serrations
- ⊗ Simple further processing – thanks to the flat head, the wood fibres are pulled downwards, enabling the seamless positioning of the next component (e.g. plasterboard)
- ⊗ No pre-drilling required in softwood
- ⊗ Fast gripping of the screw due to thread up to the screw tip
- ⊗ Can be used in service class 1 and 2 in acc. with DIN ISO 1995

\*For applications in the flooring sector, shimming with wedges is recommended after the adjustment process for load reasons

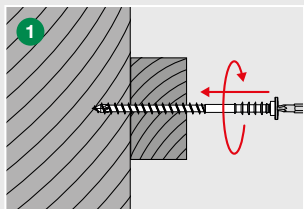


## Applications:

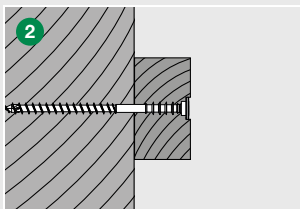
Alignment of wooden substructures on substrates made of solid wood, derived timber products and engineered wood boards in renovations and new buildings. Common applications are:

- ⊗ Suspended ceiling cladding
- ⊗ Wall cladding
- ⊗ Floor renovations
- ⊗ Counter battens for insulation under and between rafters

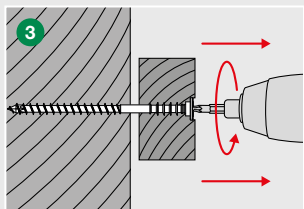
## Assembly:



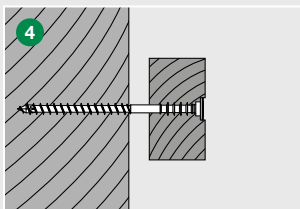
Screw the SPAX adjustment screw completely through the battens into the wooden base



Countersink the screw head at least 1mm into the battens



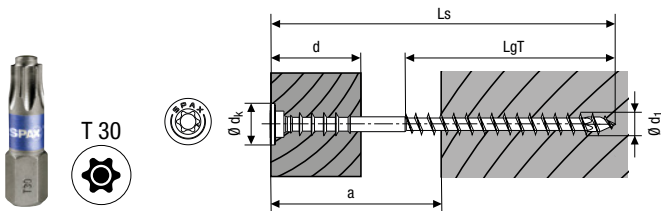
Carefully unscrew the screw using left-handed rotation until the desired spacing is reached



Installation result

# SPAX ADJUSTING SCREW

## FACTS AND FIGURES



SPAX Adjusting Screw										
Thread $\varnothing$ d1	<b>6.0</b> $\varnothing$ dk = 12.0									
Dimensions [mm]										
Total length <b>Ls</b>	60	70	80	90	100	110	120	130	145	160
Thread length <b>LgT</b>	32	37	46	61	61	68	68	68	68	68
Max. distance <b>a</b>	25	30	40	50	60	70	80	90	105	120
Max. wood thickness <b>d</b>	20	25	30	30	40	40	40	40	40	40



Subject to technical changes.

You'll also find us at:

- facebook.com/spax
- instagram.com/spax\_international
- youtube.com/user/SPAXinternational

Subscribe to newsletter:

- spax.com/newsletter

## SPAX International GmbH & Co. KG

ALTENLOH, BRINCK & CO - GRUPPE SEIT 1823

Kölner Straße 71 – 77 · 58256 Ennepetal · Germany  
Tel: +49 2333 799-1967 · Fax: +49 2333 799-199  
info@spax.com · www.spax.com

Your retailer:

